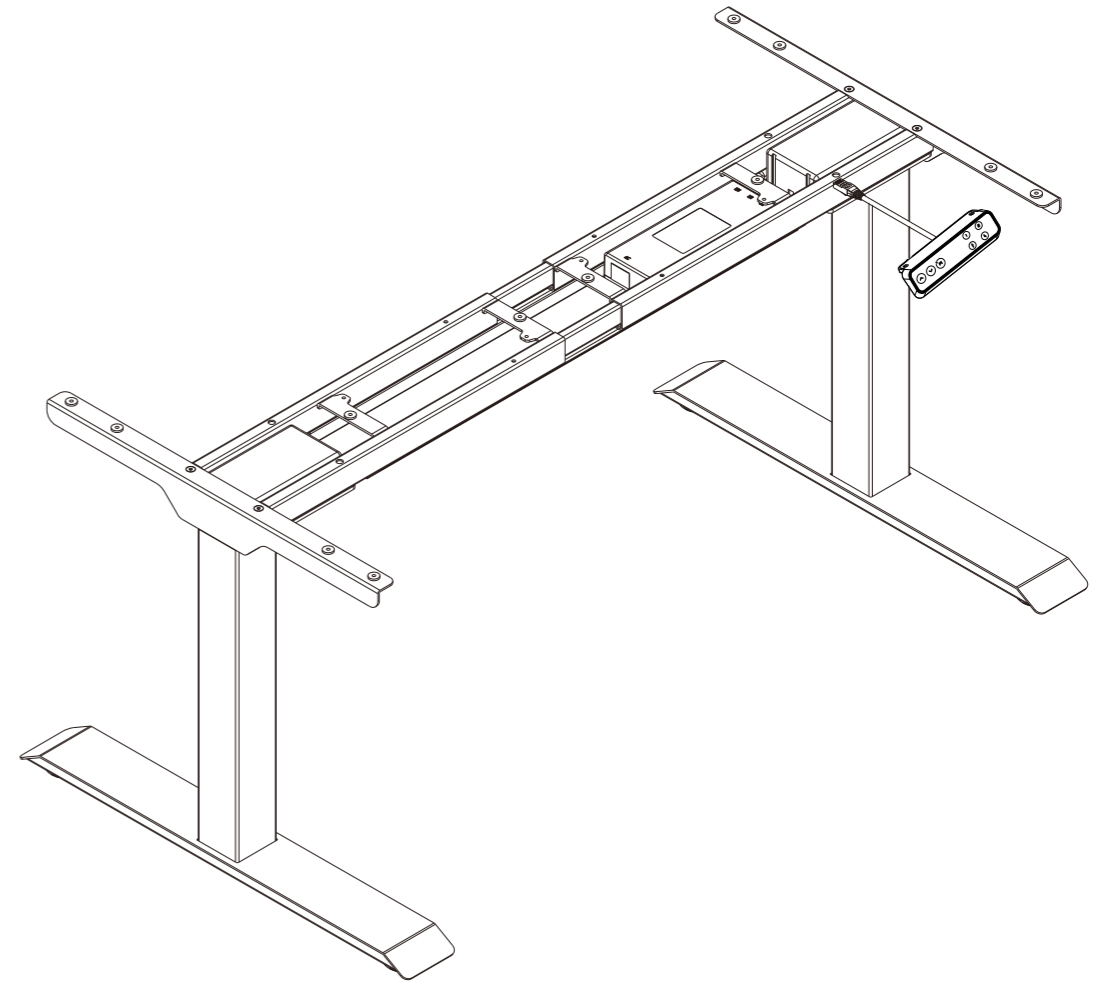


FlexiSpot



Item No. E7B-EUFS/E7S-EUFS/E7W-EUFS
Installation Guide

Specifications

Max. Weight Capacity	125 kg
Max. Speed	38 mm/s
Input Voltage	100 - 240 V
Adjustable Height	580 - 1230 mm
Wide Expand	1100 - 1900 mm
Duty Cycle	10% (Working 2 minutes then stop 18 minutes)
Working Temperature	0-40°C

Accessory Package

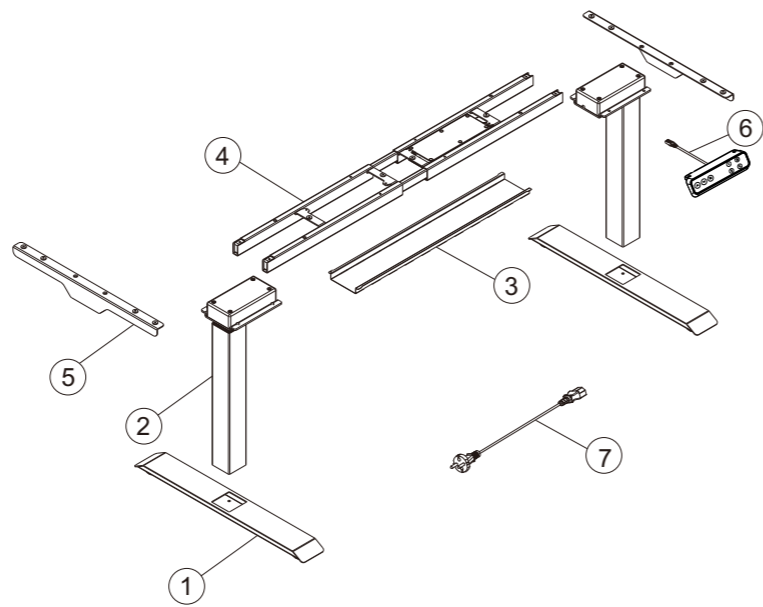
Figures shown are for reference only. Please contact customer service if there are any accessories or tools missing.

A x4 M6	B x4 M6	C x8 M6	D x12 M6	E x16 St4.2	F x1 4x4
----------------------	----------------------	----------------------	-----------------------	--------------------------	-----------------------

Parts Included

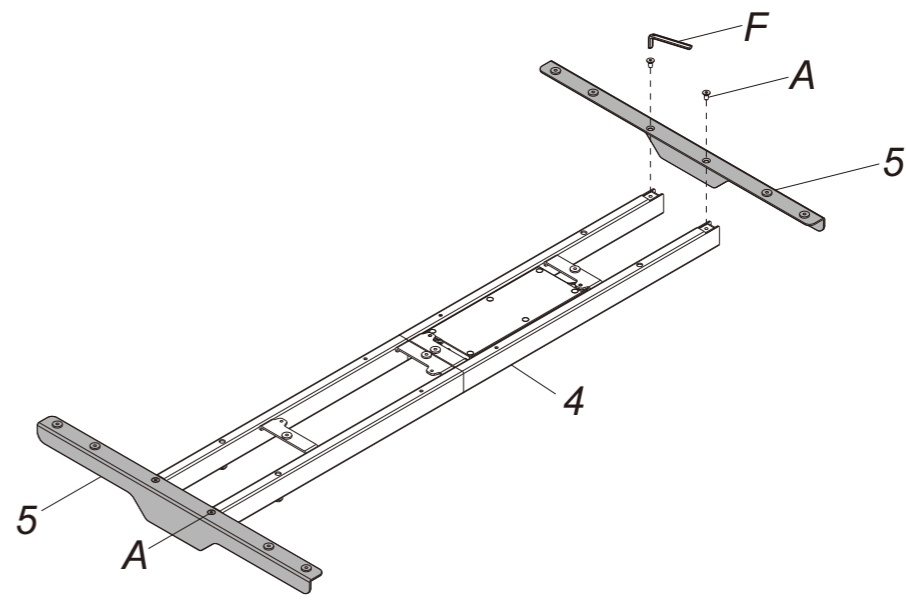
NO.	Parts	Qty	NO.	Parts	Qty
①	Pedestal	2	②	Lifting column	2
③	Cable Management Tray	1	④	Supporting beam (including control box)	1
⑤	Bracket	2	⑥	Handset	1
⑦	Connecting cable	1			

Diagram of Components



Step 1

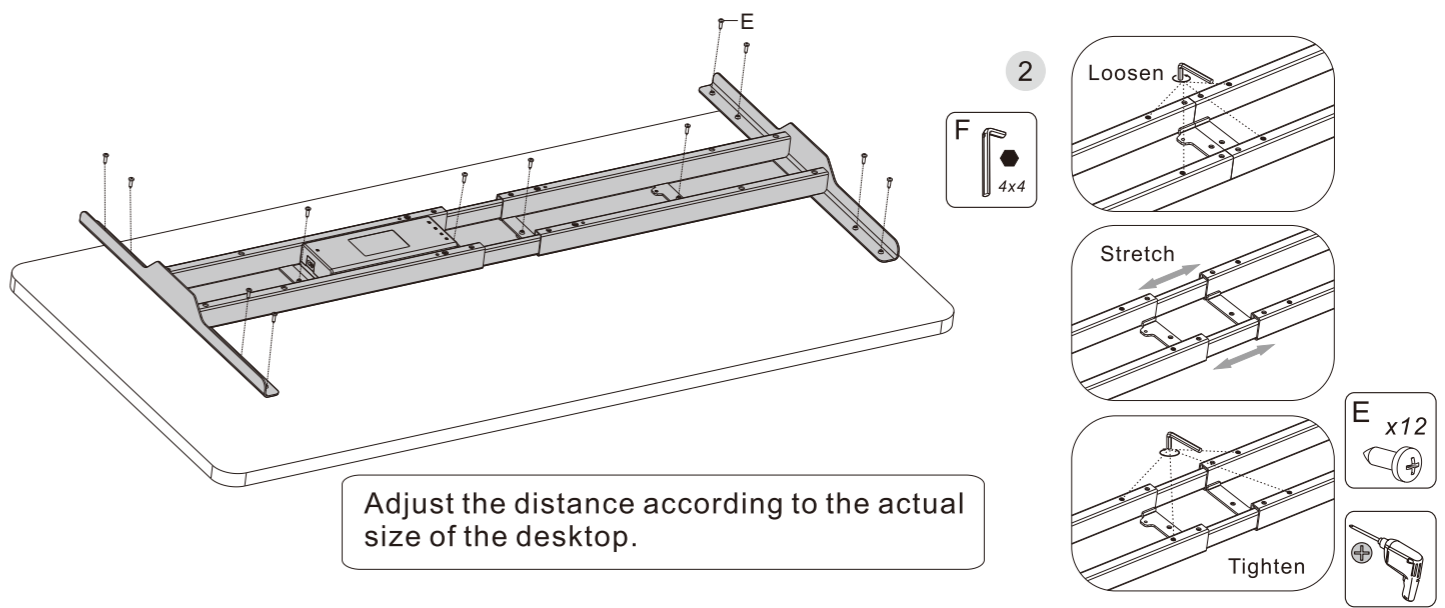
Attaching the brackets (5) to the beam (4) using 4 M6 bolts (A). Tighten with 4x4 hex key (F).



A x4
F 4x4

Step 2

Install the desktop



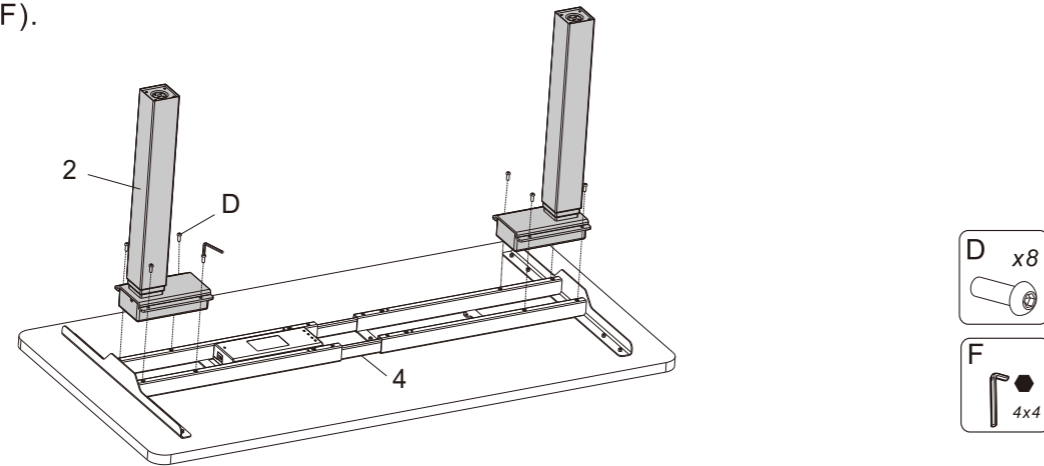
Adjust the distance according to the actual size of the desktop.

! Use method 2 in Step 6 to install the desktop, when the desk frame is stretched to more than 1720mm.

Step 3

Install the lifting column (2)

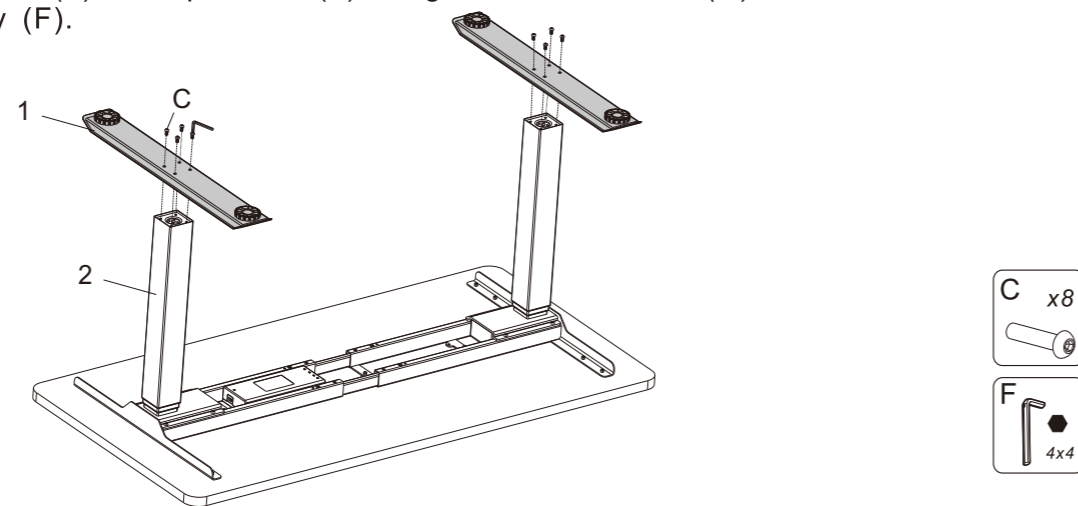
Attaching the beam (4) to the lifting column (2) using 8 M6x12mm bolts (D). Tighten with 4x4 hex key (F).



Step 4

Install the pedestal (1)

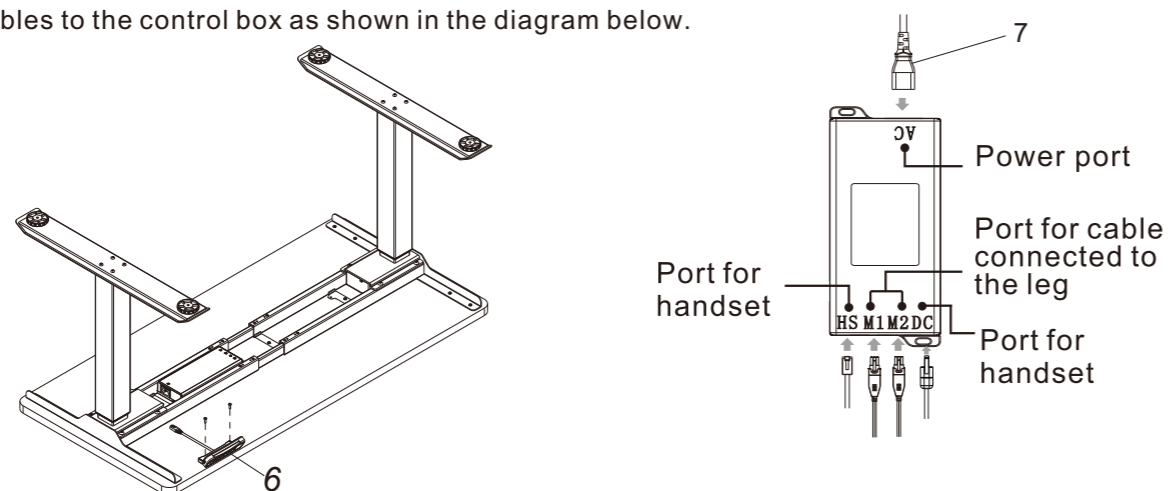
Attaching the lifting column (2) to the pedestal (1) using 8 M6x16mm bolts (C). Tighten with 4x4 hex key (F).



Step 5

Install the handset.

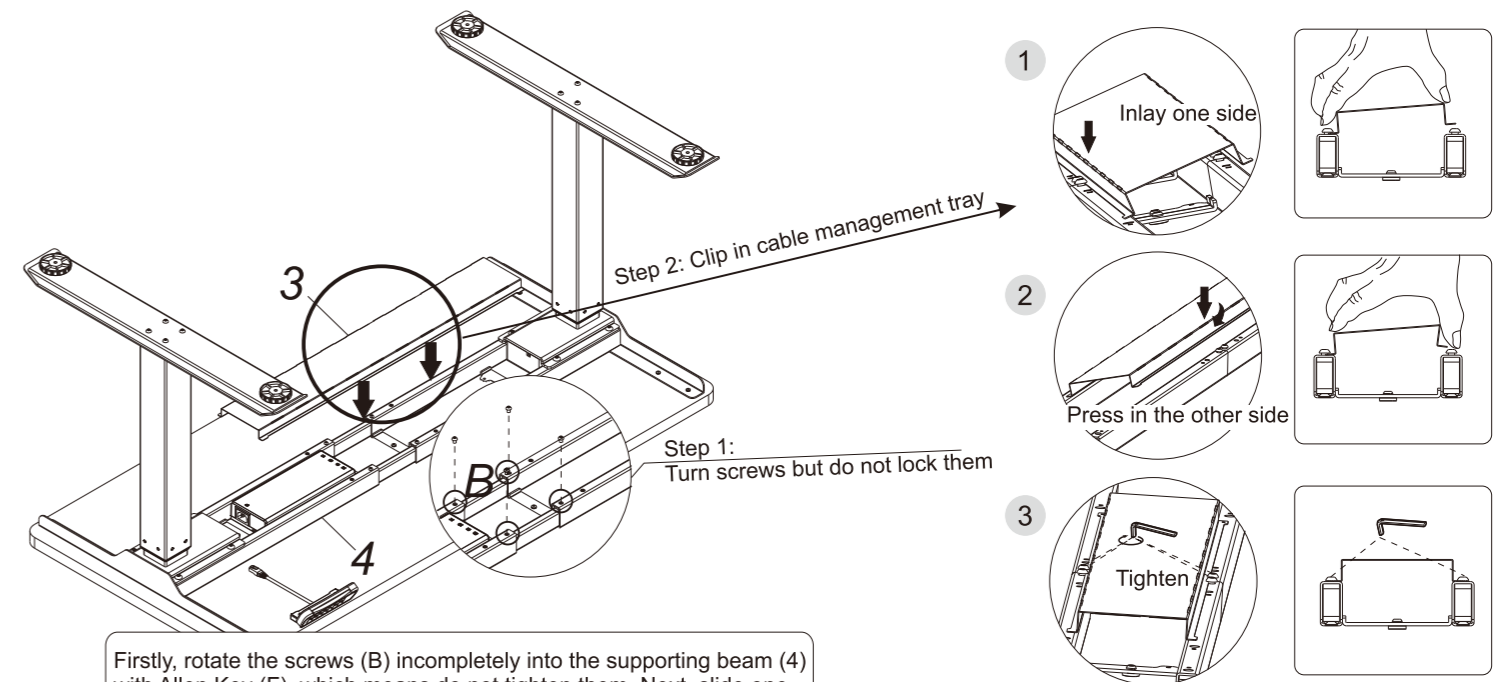
Connect the cables to the control box as shown in the diagram below.



Step 6

Install the cable management tray

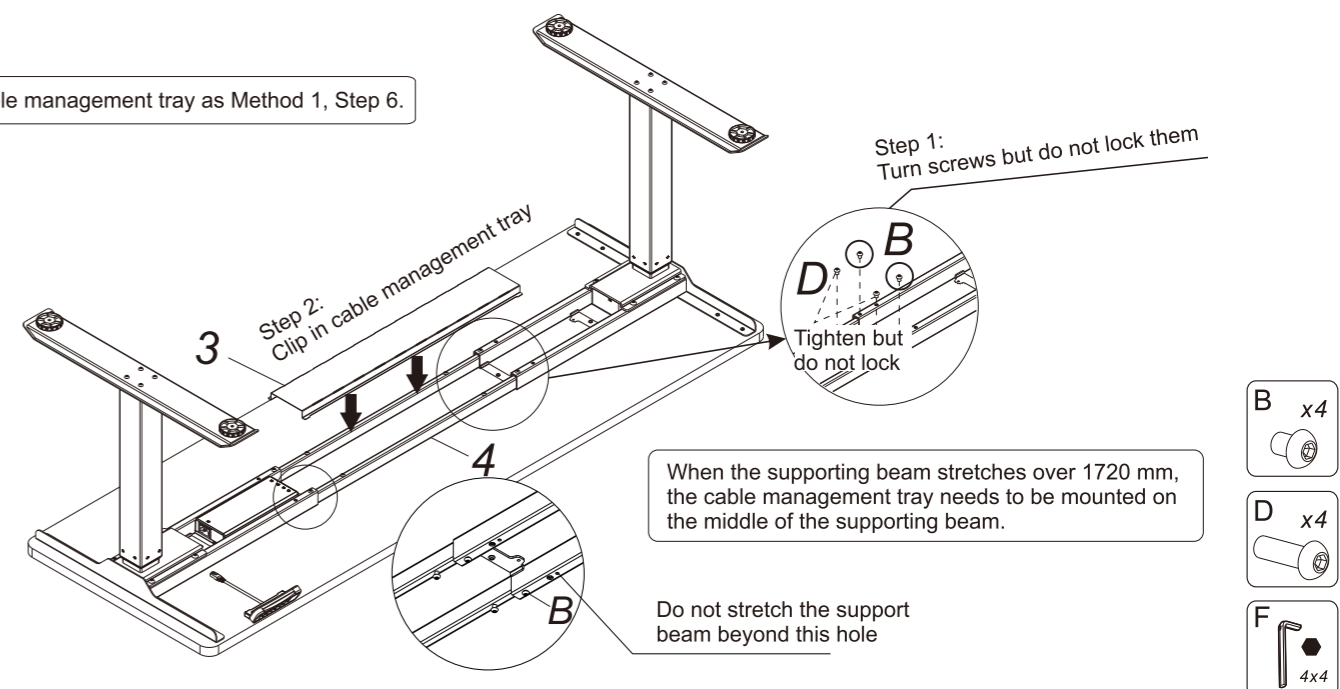
Method 1



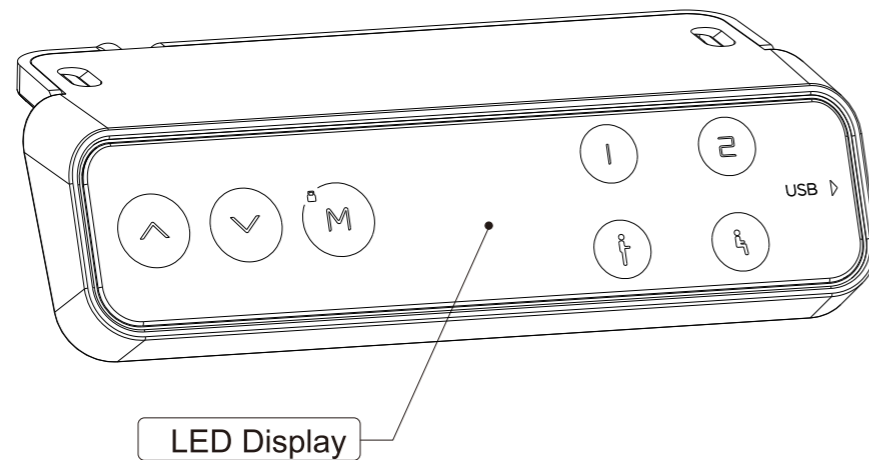
Firstly, rotate the screws (B) incompletely into the supporting beam (4) with Allen Key (F), which means do not tighten them. Next, slide one side of the cable management tray (3) into the screws (B), then the other side. Finally tighten the screws (B) with Allen Key (F).

Method 2

Install the cable management tray as Method 1, Step 6.



1. Product Outline



2. Product Specification

Button introduction: There are seven buttons that "▲", "▼", "1", "2", "人", "人", "M"

- (1) "▲" : Adjust the desk upwards
- (2) "▼" : Adjust the desk downwards
- (3) "1" : Position 1, first height position saved by the user
- (4) "2" : Position 2, second height position saved by the user
- (5) "人" : the display shows "3", which means the position of the standing height the user saved.
- (6) "人" : the display shows "4", which means the position of the sitting height the user saved.
- (7) "M" : Height saving button, for height memory function; Child lock: for security

3. Operating Instructions

- Child lock function:
 - a. When the child lock is turned on, the child lock blue indicator light (▼ and M directly above) lights up

- b. Press the button indicator to flash once
- c. To unlock or start the child lock, you need to press and hold the M button for about 5 seconds.
- d. Only when the child lock is unlocked, all the buttons can work normally.

- Height Adjustable Function:

Press the "▲" or "▼" button to adjust the height. The LED display shows the current height.
- Height Memory Function:
 - a. Press UP or DOWN button and adjust the height to the desired height. Press "M" to save the height, and the screen will display "ξ-"; Press "1", "2", or "人", "人" then, that is, save the height to the corresponding position 1 or 2, 3, or 4, which will show in the display screen as "ξ-1", "ξ-2", or "ξ-3", or "ξ-4";
 - b. Press "1", "2" and "人", "人" button directly to automatically adjust the memory height you saved.
- USB charging function:
 - a. USB output: QC2.0/QC3.0, 5.0v / 9.0v / 12.0v, ±5%, current: 1.0a
- Collision prevention sensitivity adjustment - optional features:
 - a. Press and hold the "▲" "▼" button for 5 seconds at the same time to switch the sensitivity. There are four levels of sensitivity (A-3, A-2, A-1, A-0). Each operation will switch the sensitivity into the next level.
 - b. The display shows "A-0", the anti-collision function is off; the display shows "A-1", low sensitivity; Display shows "A-2", medium sensitivity; display shows "A-3", high sensitivity;
 - c. During height adjustment, when tabletop comes in contact with another object, it instantly stops and reverses to avoid damage.
 - d. Press and hold the "▲" "▼" button for 5 seconds at the same time. If the display does not display the above code, there is no anti-collision function.
- Troubleshooting:
 - a. Reset: When the LED shows "E01", press "▼" button until the desk reaches its lowest height and rebounds to stop, it means the reset has been finished.
 - b. When it doesn't work and the LED shows "E01" or "E02", please retry 18 mins later.
 - c. If the "▼" button doesn't work, please check the cable connection and then cut off the power for at least 10 seconds. Reconnect to the power and press "▼" button to start the reset process when it shows the "E01".
 - d. If all these above process are inefficient, plz contact our customer service.

Troubleshooting

This list is used for checking and solving common faults and errors. Please contact the manufacturer if problem you encounter is not on the list below.

Problem	Solution
No response when pressing and holding the DOWN button	1. Check the cable connection.
	2. Contact the distributor or the manufacturer.
No response when pressing the UP button and DOWN button	1. Check the cable connection.
	2. Contact the distributor or the manufacturer.
Speed of lifting is slow	1. Check if the load weighs more than 125 kg.
	2. Contact the distributor or the manufacturer.
Motor does not work properly	1. Contact the distributor or the manufacturer.
Can lift but cannot lower down	1. Start the reset process.
	2. Contact the distributor or the manufacturer.
Worksurface downward sliding	1. Check if the load weighs more than 125 kg.
	2. Contact the distributor or the manufacturer.
Automatically reset a lot	1. Check if the load weighs more than 125 kg.
	2. Contact the distributor or the manufacturer.
Overworked beyond duty cycle: Max 2 min on/18 min off	1. Keep the power on and stop working for 18 minutes.
	2. Contact the distributor or the manufacturer.
The distance lifted or lowered is not accurate	1. Press and hold the "M" and "↓" button for three seconds until you hear BEEP twice to restore the factory settings.
	2. Contact the distributor or the manufacturer.

Attention

- Power supply: AC100V - 240V, frequency 50/60HZ;
- Working environment: 0-40°C;
- Before cleaning, you have to unplug the power supply cable. Clean with a slightly damp cloth to wipe away the surface dust. Keep all electrical components away from liquids. Do not damage the connection line and keep the plug in a safe position.
- Inside the control box, there are electronic components, metal parts, plastic parts, wires and so on. They should be disposed in accordance with the local laws and regulations. They cannot be disposed as household waste.
- Before using the product, please make sure the product has been installed correctly.
- Before starting use of the product, please read the instructions to fully understand all the product's functions and settings.
- Keep children away from electric height-adjustable desks, control units and handsets. Manufacturer is not responsible of any damages that result from children's unpredictable behaviour.
- Slight noise caused by the multi wedge belt or brake system will not impact the use of this product.
- Do not use corrosive or abrasive materials to clean this product and please dispose of cleaning solutions in an environmentally friendly manner.
- Understand the risks associated with using this product. Children or those with cognitive impairment should not use this product without supervision.
- If the power supply cord is damaged or broken, it must be replaced by the manufacturer or a relevant specialist to avoid any injuries.
- Please operate in a clean and safe environment. For example, do not left around your tools. And always be careful to deal with packaging materials, in order to avoid any kinds of possible danger. Potential choking risk exists when children play with plastic bags!
- If necessary, retain the original package for future transportation.

Recycling and Disposal



This product cannot be disposed of as household waste. To prevent damage to the environment, this product should be recycled. Please use the relevant recycling systems available to you or contract the distributor or manufacturer for recycling assistance.